

THERE IS
SOMETHING TO SEE
ALONG THE



F 396
.S14
Copy 1



YSA 9811 INT

2239000 70



THERE IS
SOMETHING TO SEE
ALONG THE



Passenger Department
ST. LOUIS & SAN FRANCISCO R. R.
M C M I I I

F 95
514

LIBRARY of CONGRESS
Two Copies Received
DEC 24 1903
Copyright Entry
any 24-1903
CLASS 2 X.C. No.
66967
COPY 57

Copyrighted, 1903,
By Bryan Snyder, Passenger Traffic Manager,
St. Louis & San Francisco Railroad.



Designed, Arranged,
Engraved, and Printed by
THE MATTHEWS-NORTHRUP WORKS,
Buffalo and New York.



**BEFORE THE COMPLETION OF THE LINES
NOW COMPRISING THE FRISCO SYSTEM,**

a trip between the Southeast and the Missouri or the Southwest and the Mississippi rivers was looked upon with misgivings, a monotonous, if not a tiresome, journey being invariably contemplated. All of the lines of railway which engage in Southwestern or in Southeastern traffic have improved their facilities, perhaps to a greater extent than in any other sections of the Union; but they have not been able to change the topography of the country they traverse, and the fact will always remain that the Frisco is the only natural scenic route through the territory which it serves. This system crosses the different ranges of the Ozarks three times: the Ozarks proper, in Missouri; the Boston Mountains, in Arkansas; and the Kiamichis, in the Indian Territory; winding its way in and out of these differently designated ranges for practically the entire distance. The scenery is all picturesque—much of it grand. Many of us in the Southwest



In Ha Ha Tonka Park.

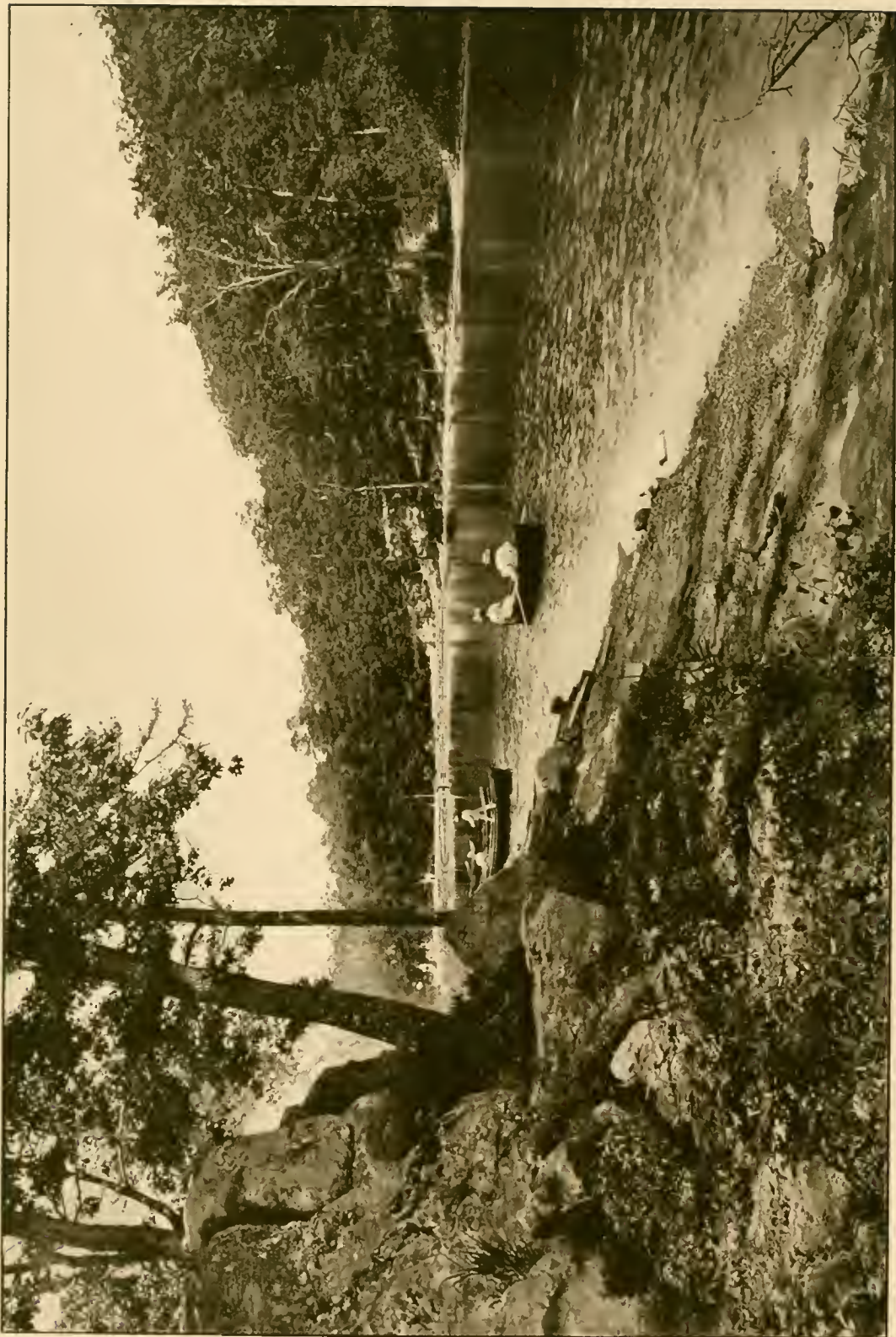
are prone to consider the grandeur of the Adirondacks, the Alleghenies, or the Rockies, while at our very doorstep the blue Ozarks, the rival of any of the other ranges, are almost overlooked.

The few views we here present were taken along the Frisco System, and will be remembered by its patrons. There are thousands of others distinctively as fine; in fact, any one who has traveled the line will describe the Frisco as a continual panorama, from end to end.

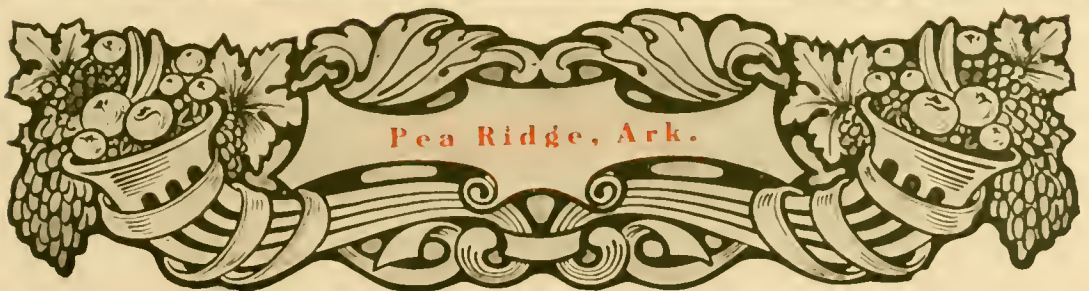
Comfort is, perhaps, the most potent consideration in a railway journey. Nature has enabled the Frisco to provide it most adequately, so far as air, scenery, and water are concerned. Mr. Fred Harvey has made it possible for us to guarantee preëminently the best railroad restaurant and café-car service extant. The Frisco is equipped with solid wide-vestibuled trains, observation sleepers, cars lighted and cooled by electricity, which some of our competitors are supplied with to some extent as well; but what we offer as a particular and individual inducement for travel is, that **THERE IS SOMETHING TO SEE ALONG THE FRISCO.**

Saint Louis, June 1, 1903.





Eureka Springs, Ark.



Near the Famous Battlefield



White River Valley



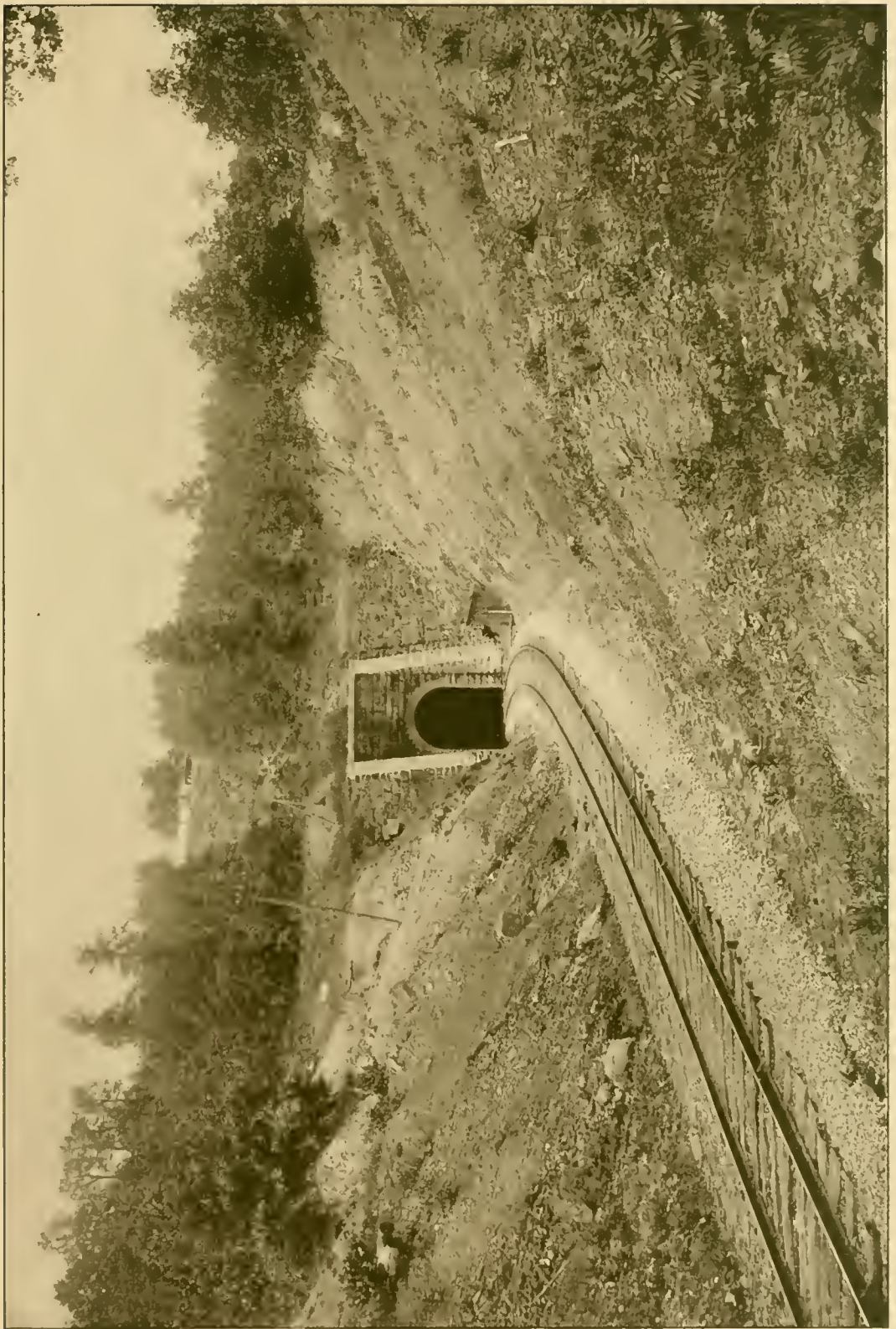


Meramec River

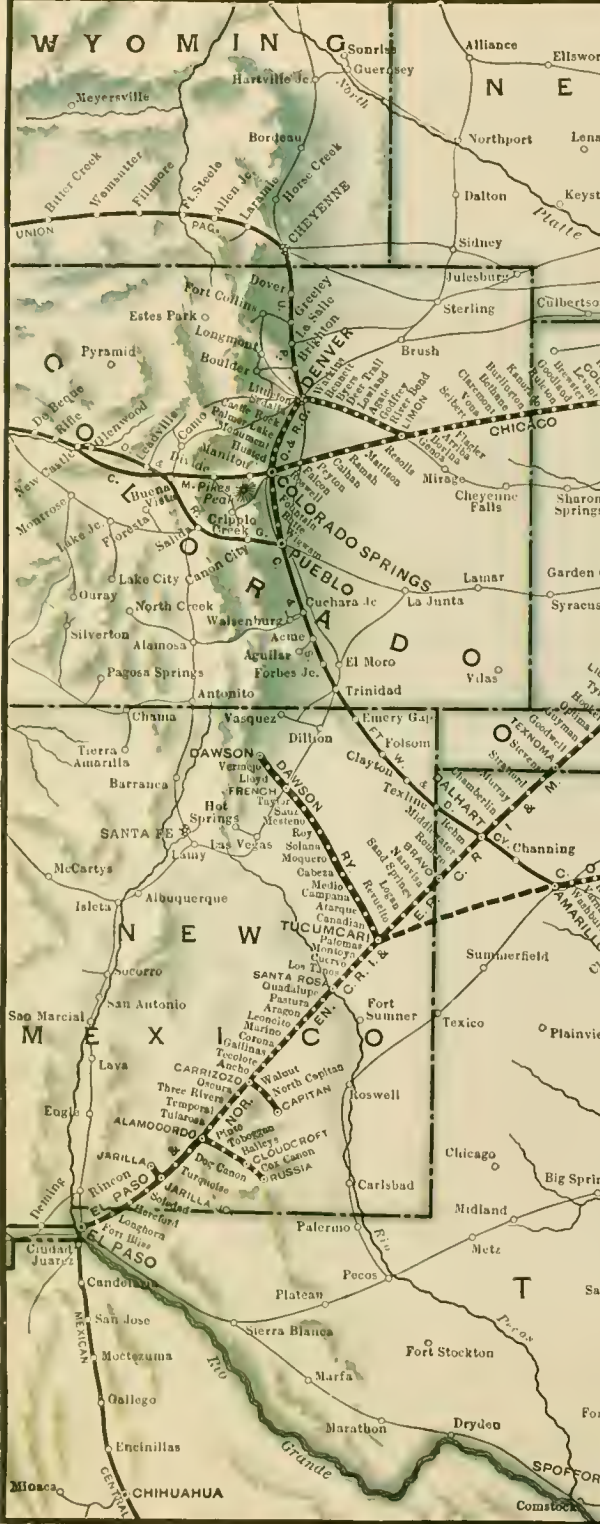
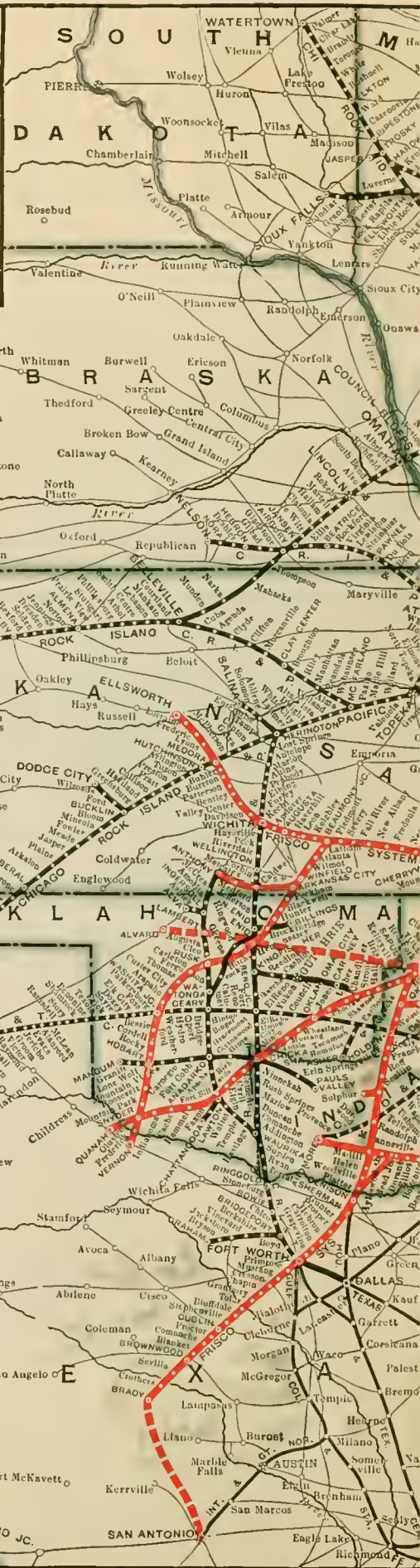
Near Moselle, Mo.

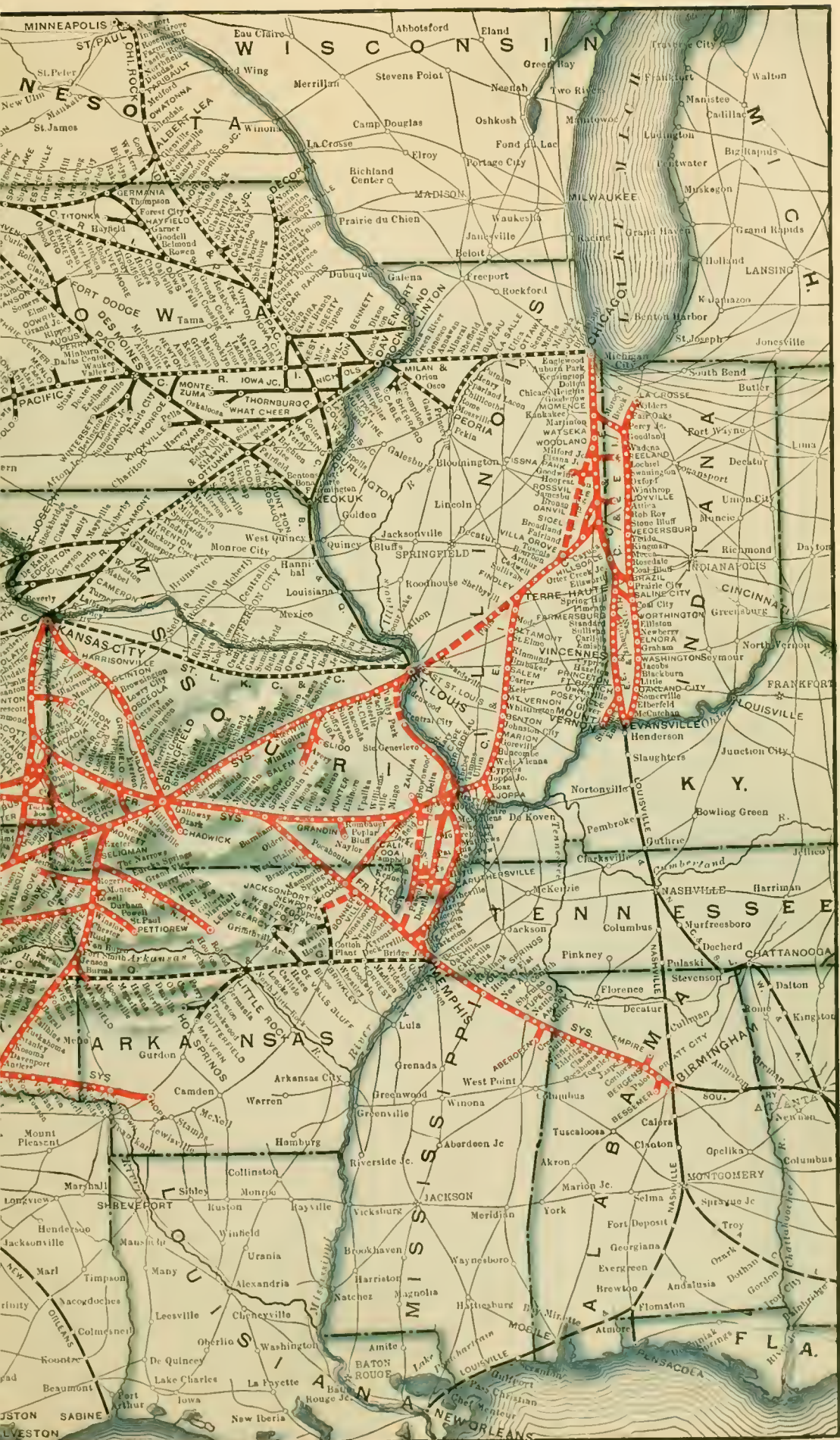


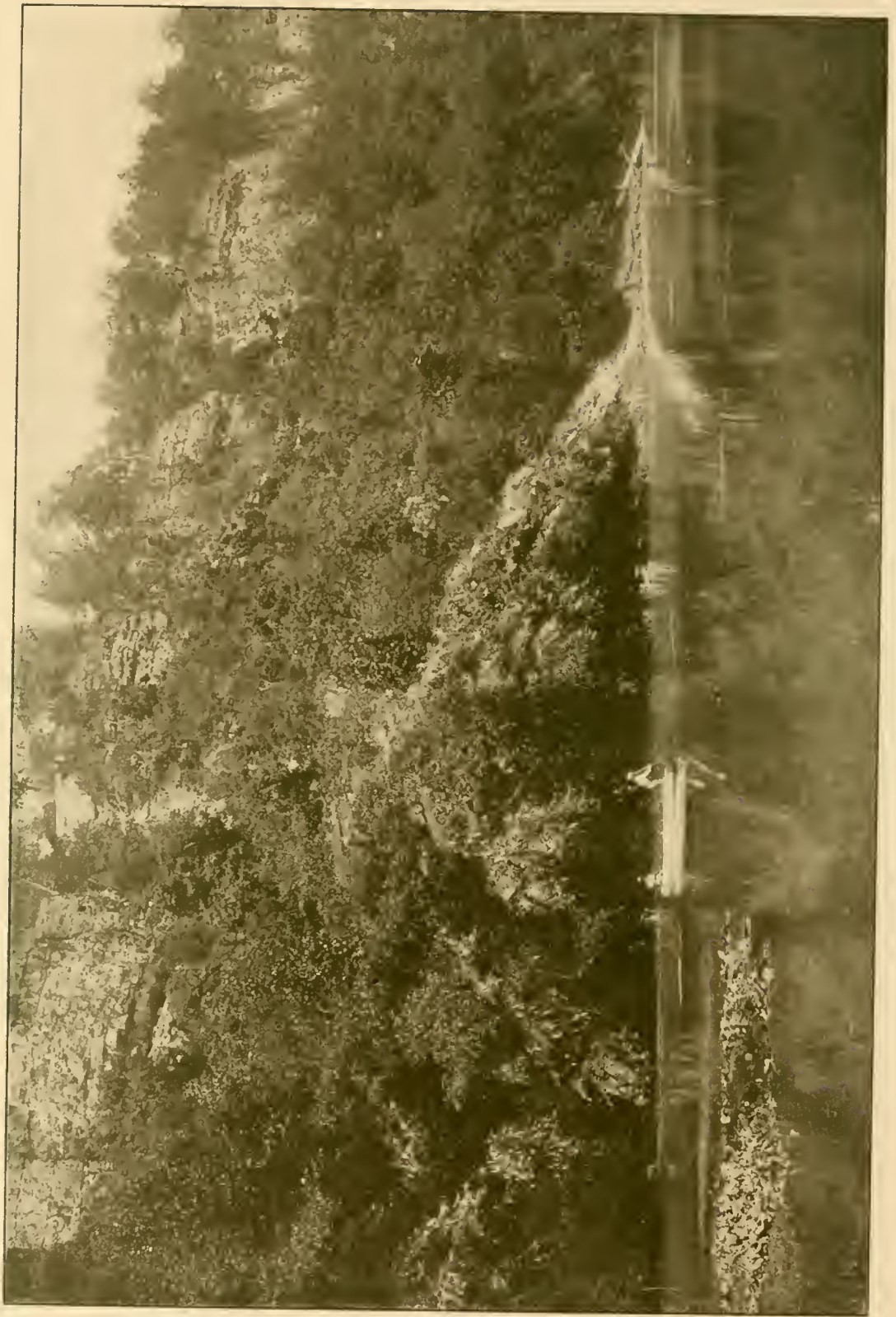
Near Altamont, Kan.



Through Boston Mountains, Ark

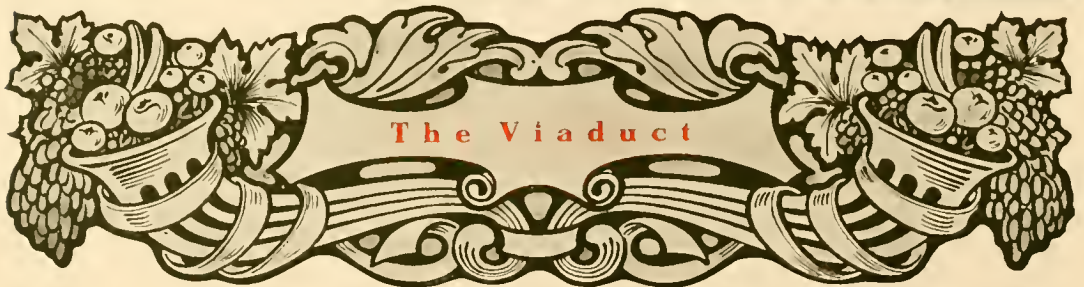
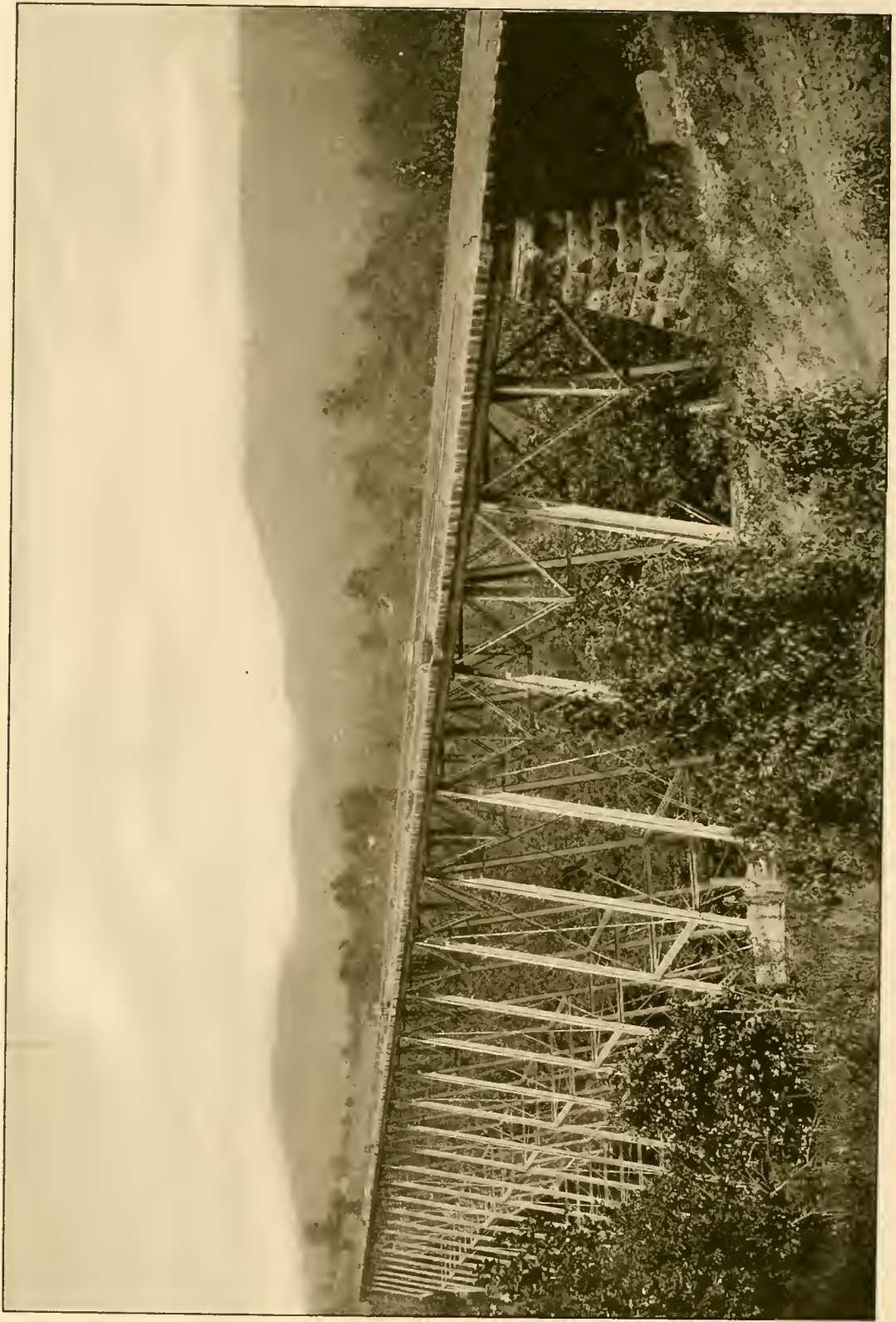






Big Piney River





Near Winslow, Ark.



Below Mammoth Spring



On White River, near Monte Ne, Ark.

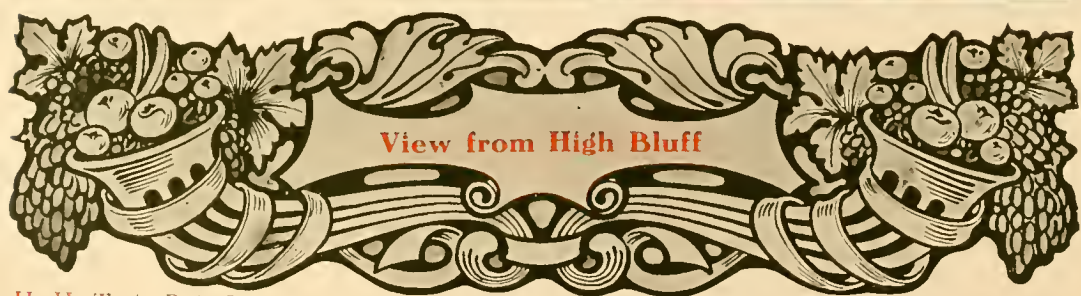


Deer Leap

In Ha Ha Tonka Park, Mo.



View from High Bluff



Ha Ha Tonka Park, Looking West.



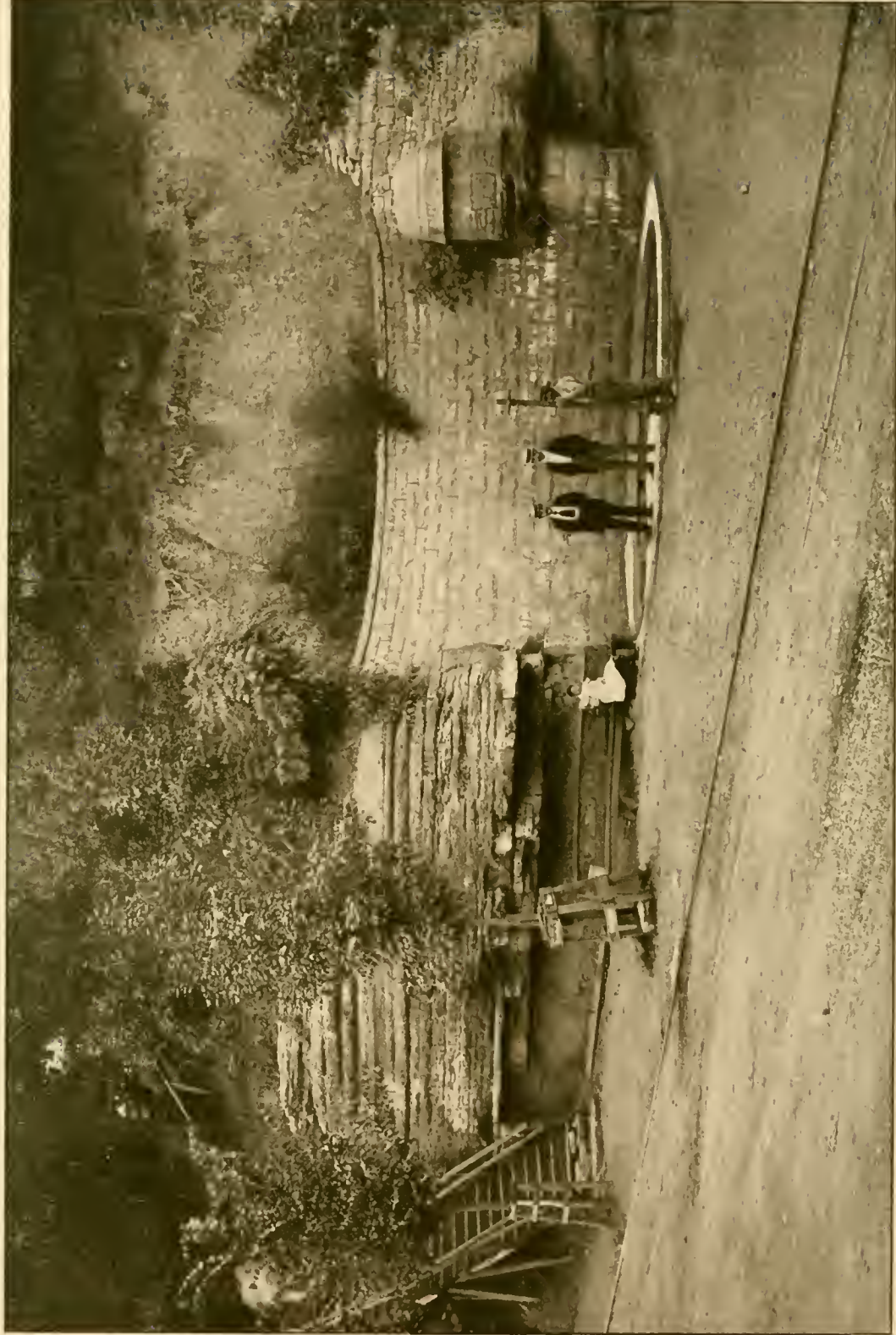
Along Spring River, Ark.



Near Fredonia, Kansas



Fureka Springs.



Eureka Springs, Ark.



Lancaster Bluffs, Ark.





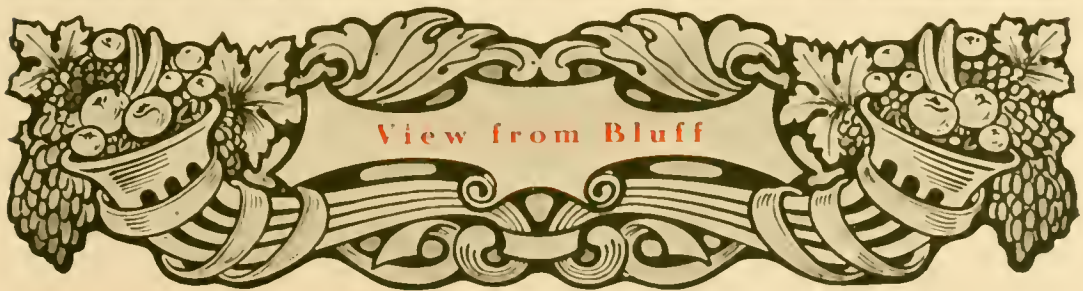
On M-ramec River, near Pacific, Mo.



Spring River



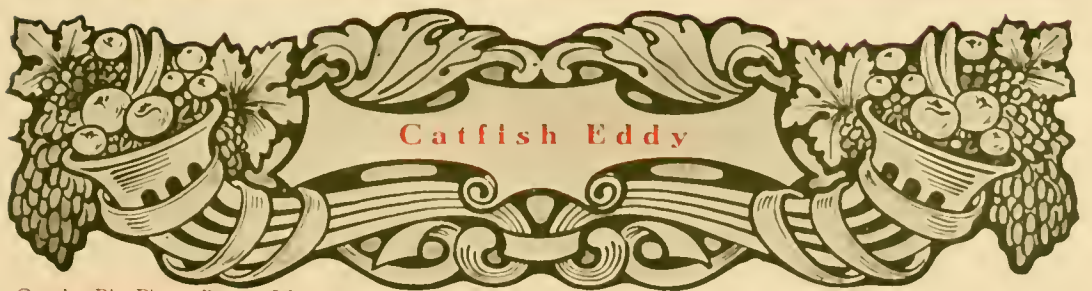
In Ha Ha Tonka Park



Looking Southeast over Ha Ha Tor ka Park, Mo



On White River, Ark.



Cattfish Eddy

On the Big Piney River, Mo.





On Niangua River, Mo.



View in Ha Ha Tonka Park



On the Big Piney River



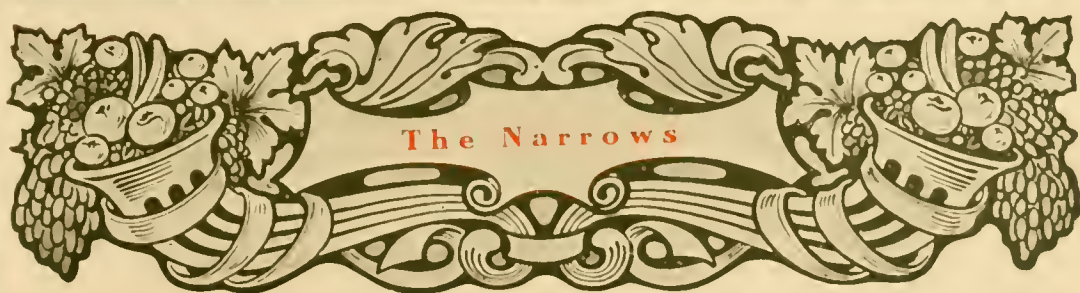
Niangua River, Ha Ha Tonka Park, Mo.



On Harrison Point, White River, Ark.



An Arkansas View — Altitude, 2,200 feet.



On White River, Ark.



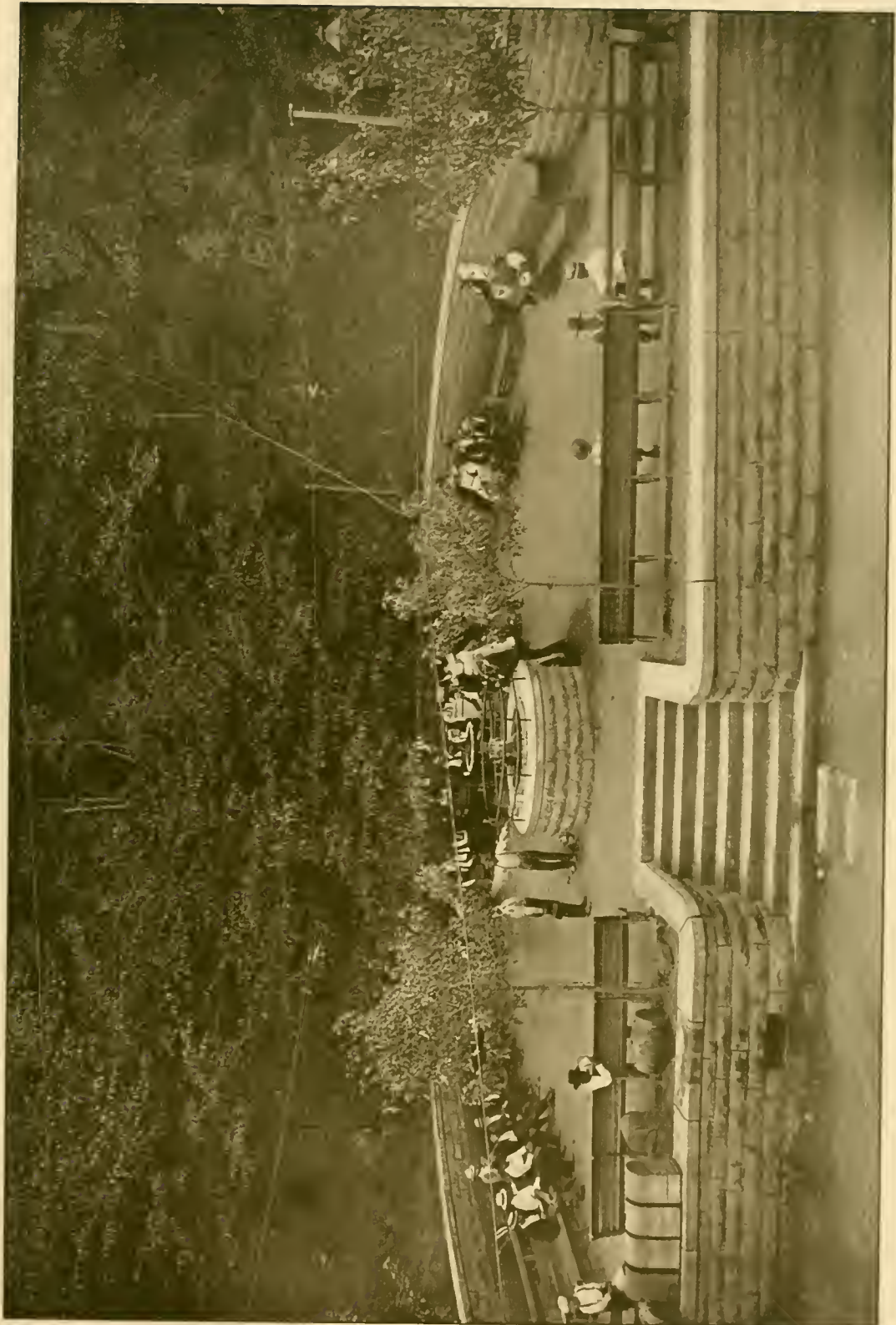
On White River, Arkansas.



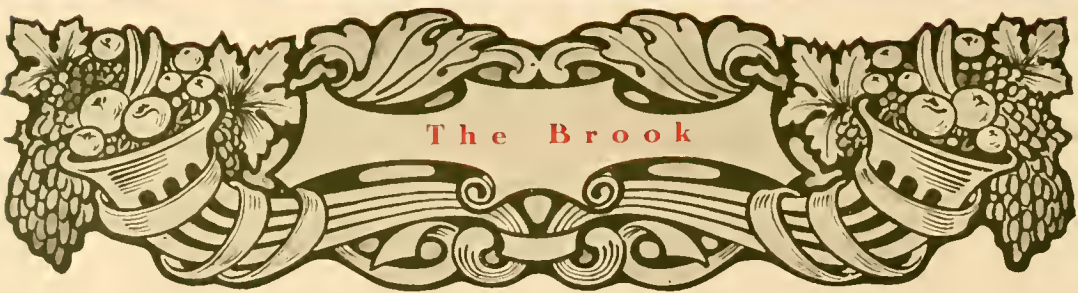
On Gasconade River, Mo.



Eureka Springs, Ark.



Fureka Springs, Ark.



A Tributary of Spring River, Ark.



Near Monte Ne, Ark.



LIBRARY OF CONGRESS



0 014 647 781 1

